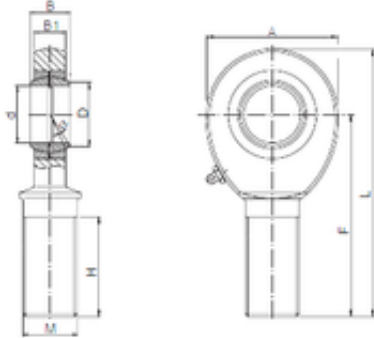




BEARING BOWER CORP.

35 mm x 37,7 mm x 43 mm ISO SAL 35 plain bearings



Bearing No. SAL 35

Bore Diameter	35 mm
d	35 mm
B	43 mm
A	80 mm
B1	28 mm
D	37,7 mm
F	125 mm
H	77 mm
L	165 mm
Bolt (G)	M36x2

SAL 35 Bearing 2D drawings and 3D CAD models